



Egr-3 Polyclonal Antibody

Catalog No	YP-Ab-01684
Isotype	IgG
Reactivity	Human;Mouse;Rat
Applications	IHC;IF;ELISA
Gene Name	EGR3
Protein Name	Early growth response protein 3
Immunogen	The antiserum was produced against synthesized peptide derived from human EGR3. AA range:338-387
Specificity	Egr-3 Polyclonal Antibody detects endogenous levels of Egr-3 protein.
Formulation	Liquid in PBS containing 50% glycerol, 0.5% BSA and 0.02% sodium azide.
Source	Polyclonal, Rabbit,IgG
Purification	The antibody was affinity-purified from rabbit antiserum by affinity-chromatography using epitope-specific immunogen.
Dilution	IHC: 1/100 - 1/300. ELISA: 1/10000.. IF 1:50-200
Concentration	1 mg/ml
Purity	≥90%
Storage Stability	-20°C/1 year
Synonyms	EGR3; PILOT; Early growth response protein 3; EGR-3; Zinc finger protein pilot
Observed Band	
Cell Pathway	Nucleus .
Tissue Specificity	Brain,Peripheral blood T-cell,
Function	developmental stage:In T-cells, expressed 20 minutes following activation.,function:Probable transcription factor involved in muscle spindle development.,similarity:Belongs to the EGR C2H2-type zinc-finger protein family.,similarity:Contains 3 C2H2-type zinc fingers.,
Background	This gene encodes a transcriptional regulator that belongs to the EGR family of C2H2-type zinc-finger proteins. It is an immediate-early growth response gene which is induced by mitogenic stimulation. The protein encoded by this gene participates in the transcriptional regulation of genes in controlling biological rhythm. It may also play a role in a wide variety of processes including muscle development, lymphocyte development, endothelial cell growth and migration, and neuronal development. Alternative splicing results in multiple transcript variants encoding distinct isoforms.[provided by RefSeq, Dec 2010],

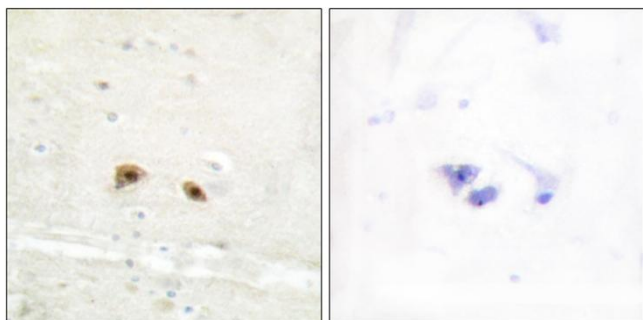
**matters needing attention**

Avoid repeated freezing and thawing!

Usage suggestions

This product can be used in immunological reaction related experiments. For more information, please consult technical personnel.

Products Images



Immunohistochemistry analysis of paraffin-embedded human brain tissue, using EGR3 Antibody. The picture on the right is blocked with the synthesized peptide.